



COMBWICH, OTTERHAMPTON AND STEART NEWSLETTER



Otter Tales

Inside this issue

- Front Page
- Christmas Lights Event
Page 2
- Parish Council Report
Page 3
- OPRA
Pages 4 / 5
- Roses in December
Page 5
- Otterhampton Village Hall
Page 6
- Candy Cane Secret
Bob Birkenhead
Page 7
- Garden Club Show
Page 8
- Scorcheo
Church Services
Page 9
- Harbour View Bar
Page 10
- Combwich and District WI
Page 11
- Christmas Market
Pages 12 / 13
- Salt Marsh Beef
Page 13
- Hinkley Community Days
Page 14
- WWT Steart Marshes
Page 15
- Anchor & Otter Wheels
Page 16
- Mobile Library
- General Information



Otterhampton Parish Recreation Association (OPRA)
Registered Charity Number 1124017

Christmas Tree Lighting Evening & Events



Sunday 3rd December

- 3.45 Carols on the Church Bells
- 4.00 Christingle Service
- 5.00 Lighting the Christmas Tree



- Carols around the Tree
- Candle light Procession to Village Hall and Harbour View Bar



- Mulled wine
- Mince Pies
- Hot Chocolate



Otterhampton Parish Council

Otterhampton Offcuts
Snippets from our September - November 2023 meetings

Resignation of Councillors

Rachel Perrett (Vice- Chair) and Andy Darch gave their resignations following the October meeting. We would like to thank them both for all their work and wish them well for the future.

New Councillors

A big welcome to our two new councillors, Carol Bradbury and Dave Dodge (Stear ward). We look forward to working with them over the coming months.

Councillor Vacancy

There is currently a vacancy for a new councillor to join the parish council, please look out for our posts on the All Things Combwich and Otterhampton Parish Council Facebook pages, Combwich noticeboards or email the clerk.

Overhanging Foliage

Thank you to those who have cut back hedges and overhanging foliage.

Dog Fouling

A constant issue is the amount of dog fouling seen around Combwich. It is an offence for your dog to foul and it not be picked up. If you should witness this please report it to the dog warden (message or phone 0300 123 2224).

Play Area

It is disappointing to report antisocial behaviour taking place in the children's play area. In September it was reported that a dog had fouled in the area leaving a father to clean it up so his child could play safely. In October, as per the photos, damage has been done to the grass areas by bikes which are prohibited in the area. We have also received reports of children on the roof of the shelter. November



has seen damage to the hedgehog rocker and toddler swing seats.

Please remember that it is the precept that you pay in your council tax that pays for any damage to be fixed, is this what you want your money spent on?

Road Gutters and 30mph Sign – Thanks

The parish council would like to thank residents who have taken the time to clear the weeds and grass from the gutters and trim the hedging around the 30mph sign. These areas look much better, thank you!

Village Shop

A questionnaire will be going out to all households in the new year, please look out for it.



Parish Council Meetings

Parish council meetings are open to the public so if you have a subject you would like to discuss please come along or email the clerk in advance so that the matter can be discussed.

Parish Council meetings take place on the second Thursday of the month so the next parish council meetings will be on Thursday 14th December, 11th January and 8th February starting at 7.00pm, in Otterhampton Village Hall.

Full details of the decisions taken at parish council meetings are contained within the minutes which are available on the three village notice boards (opposite the Post Office, opposite the Anchor Inn by the play area and on the wall of Ferricies Farm, Steart) or the Combwich.org.uk website

Contact for Clerk (Gina Mear) otterhamptonpcclerk@gmail.com or Tel 01278 652499

Email: otter.tales@aol.com

www.combwich.org.uk/about-otterhampton/otter-ales

Contact details for the parish council PARISH COUNCILLORS

Lindsey Parsons (Chair)	01278 653700
Tina Gardener	01278 652642
Mike Haycraft	01278 653264
Connie Sanders (Vice-Chair)	01278 653307
Carol Bradbury	01278 652313
Dave Dodge	
Gina Mear (Clerk)	01278 652499
otterhamptonpcclerk@gmail.com	
County Ward Members	
Mike Caswell	01278 652043



Otterhampton Parish Recreation Association (OPRA)

Registered Charity Number 1124017

The annual village firework display took place on Sunday 5th November. It was touch and go on Sunday morning whether we would go ahead. The common was saturated and the forecast wasn't looking very promising. Rather than erring on the side of caution we decided to risk it as there was a greater chance it wouldn't rain compared to it raining. Our optimism paid off and it was an amazing evening. We are not very good at estimating crowd numbers, but we think it was our biggest ever.

A huge thank you to Paul Cadmore and Simon Briggs who let off the fireworks alongside newly trained Steve Lang.

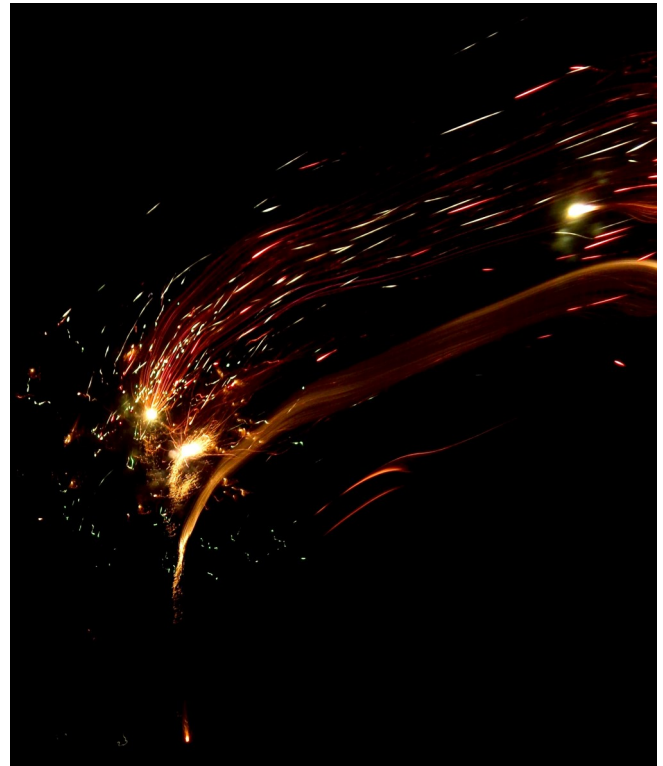
The queue for the BBQ never reduced from 5.30pm to after the fireworks had finished. Apologies to those at the end of the queue as we ran out. We'll have to rethink our quantities for next year. A special thanks as always to Ray Bollen for manning the BBQ assisted by Di and Pete, they worked tirelessly and missed all the fireworks!

Thanks also to Mike on the PA, Mel responsible for the Beacon and Neil and Frank who helped with the setting up and clearing away and to Sue for organising the collections. It was very much appreciated.

Thank you to everyone who made donations, unfortunately we can only take cash on the night, although we will review this for next year. Donations on the evening and from the jar in the village shop totalled £473.55 plus profit from the BBQ of £171.00. We saw a large increase in the cost of the fireworks this year and the total cost was £940 plus VAT. If you would still like to contribute you can make a transfer to our bank account **Otterhampton Parish Recreation Assoc - Sort code: 09 01 55 Account: 03392081.**

The next event on our calendar is the Senior's Christmas dinner which will be held on Saturday 2nd December. The invitations have already been sent out, but if you have reached the age of 65 and not received an invitation and would like to attend, please contact Tina on 652642 or Carol on 652313 for an invitation.

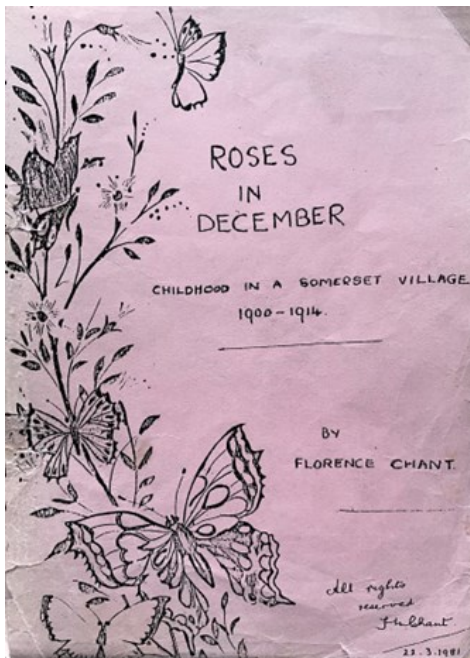
This will be followed by the lighting of the village Christmas tree on Sunday 3rd December at 5.00pm. There will also be Carol singing and mulled wine organised by the Gardening Club and Harbour View. See front page for the evenings timetable of events.



OPRA would like to wish you all a very Merry Christmas



and a Happy New Year



Roses in December *By Florence Chant*

Otter Tales will serialise an abridged version of Florence Chant's childhood memories of living in Combwich before the First World War entitled "Roses in December".

Florence Chant finished writing "Roses in December" in early 1981. Her book was typed, and Florence Chant edited the final copy by hand and a number of copies were printed, which included the written amendments. The pink covered books were put on sale in the village. It is unknown how many copies were printed or sold or how many copies still exist in the village.

Otter Tales will be drawing upon two original copies and a digitalised copy made by Paul Bradbury in 2019 for the Otterhampton Parish Local History Project. In her book Florence Chant trusts "that someone will be interested in the result."

Preface

The 19th Century had come to an end, the Victorian era was drawing to its close and the new century was eleven months old when I came into the world as the third child in a very ordinary working-class family. The place of birth as recorded on my birth-certificate was:- Main Royal House, Combwich, in the parish of Otterhampton, Somersetshire.

The village of Combwich, situated on the estuary of the River Parrett between Bridgwater and the sea, is often missed today by motorists in the vicinity since it lies about a quarter of a mile off the main road leading from Bridgwater and Cannington to Stogursey and the recently established Hinkley Point Atomic Power Station. The village street comes to a dead end when it reaches the Common on the river-bank and this is the nearest point to the sea which can be reached by road vehicles.

In early times, probably until the 13th century, the village (pronounced "Cummidge") was of great strategic importance situated as it was at the lowest point where the estuary of the River Parrett could be forded at low tide. At high tide, ferry boats plied regularly here between Combwich on the one side and the rich pastures of the Pawlett Hams on the opposite bank of the river. At this time the ford and ferry provided the only direct means of travel between the area now known as North Somerset and the Exmoor District and North Devon. There were inns at both ends of the ferry but on the Pawlett side the one inn known as "The White House" had by the time of my childhood fallen into ruins while that on the Combwich side, the Anchor Inn, flourishes to this day.

The ferry ceased to have a vital function when it was found possible to bridge the estuary farther up the river at Bridgwater. This could have meant for Combwich a gradual decline into near oblivion had it not been for factors within the confines of the village making it possible for it to develop into a small, thriving, hard-working community, compact and prosperous in a modest way by the end of the nineteenth century. Chief of these factors, apart from the position of the village on the tidal estuary of the River Parrett, was the presence of deep deposits of clay eminently suitable for the manufacture of building bricks, roofing tiles, drainpipes and flooring



squares all of high quality. The brick-works provided employment on which the economy of the village mainly depended.

The other industry carried on in the parish was farming. In the Combwich section of the parish this provided employment for only a small proportion of the men and for the adolescent boys leaving school at the age of thirteen. There was very little arable land, most of the farms being mainly devoted to dairy farming.



A visit paid recently to the village made me realise that Combwich now bears little resemblance to the place of my birth as I remember it during most of the fourteen years from 1900-1914. The outbreak of the First World War heralded the disruption of village life and introduced a new era of enforced integration into the wider world outside. Young men joining the forces found new, exciting experiences and those who survived the cruel war rarely found that they could again settle to village life. I could not, on my recent visit, find more than five people whom I remember from my childhood days. Soon none of us will be left.

Some of my young relatives and friends have shown interest in my nostalgic reminiscences and have asked me to write about the village life while memory is still fresh. At least I am willing to make the effort and trust that someone will be interested in the result.

The story will be a simple one, of necessity mainly autobiographical. Having lost three brothers who might have helped me, I now have no-one to consult. No doubt I shall make many mistakes and suffer frustrations when memory fails me but I shall try to paint a true picture of village life as we lived it. There is a saying,

"Somerset born, Somerset bred, Strong in the arm and weak in the head"

I can only hope that both my arm and my head will prove equal to the strain of the task which I have been set.

Continued in the next edition of Otter Tales.



Christmas Raffle

It's that time of year again when OVH will be teaming up with the Harbour View Bar to run the popular Christmas raffle, sharing the proceeds. As in previous years, there will be an array of fantastic prizes including hampers and a lot of other festive treats. Tickets cost £1 each and are available from all of the OVH trustees or at the Harbour View Bar. The draw will take place in the bar on Sunday 17th December at 6pm, so come along to join in and enjoy a drink.

Please help the village hall to raise funds from the comfort of your own home by registering for Easyfundraising. It's easy to register and when you sign up, over 7,500 brands including Tesco, M&S, Argos and Ebay will donate part of what you spend to the village hall. It won't cost you any extra as the cost is covered by the brand/retailer.

The Candy Cane Secret

By Katy Mckellar, age 11

Once upon a snowy night, the moon shone over the freezing cold snow, causing it to glow under the stars. Parkday Street was absolutely covered with sparkly Christmas lights. Families were watching festive movies, laughing. Others put up the Christmas tree, decorating it with shiny tinsel and colourful baubles. Everyone shook with excitement waiting for Santa Claus that evening. The nearest corner shop was bombarded with the newest sweets. The village cheered with happiness as the new trending candy canes were delivered. They went off sale really quickly as everyone (around 400 people) wanted one! They came in all types of different flavours, such as strawberry, blueberry, vanilla and mint. The children were filled with joy. The parents were filled with joy. The entire village was filled with joy. Not for long...

The next day was Christmas! The children of Parkday Street dashed to their tree to see if there were any presents for them. There was, but with a twist, all the presents they opened were filled to the brim with candy canes! Weirdly, the same colour they ate yesterday was the colour they got in the box. No other colour. They were not sad about it, just confused really. The kids obviously still ate them, but they felt really dizzy after. The parents turned on the news and they gasped. The creator who made the candy canes were some crazy scientists who broke out of prison. Everyone's eyes suddenly turned to the colour of their candy cane they ate. That's when they all had powers like ELEMENTS! Strawberry was fire, Blueberry was water, Vanilla was air and Mint was Nature. You might think this is pretty cool, but it was super dangerous. Children and powers really don't mix. Suddenly, a child flooded the living room and the family rushed out of their flooded home. The village that used to be safe, fun for everyone, happy, turned into a dangerous village, the one everyone feared. Everything was burned, flooded, missing or overgrown with weeds. Everyone thought the village was destroyed. That's when a very very smart girl called Katy invented a medicine to wear the powers of the community off. After days of work, she finally invented exactly 400 bottles of Element medicine. Since Katy was such a nice girl, she gave it away for free! Everyone went back to normal and helped to rebuild and clean everything. Everyone had a great New Year's Eve. The end!

A note from the author: I hope all of you reading this have a wonderful Christmas and an epic New Year!!!



Bob Birkenhead presented with the Somerset County Chairman's' Award

Bob Birkenhead was an active Otterhampton parish councillor for many years and ended up as chairman of the council. Now off the council, he takes pride in doing practical things to improve village life.

The wonderful show of daffodils in the public areas of the village every spring are down to Bob and his wife Carol, who spent many hours planting them. The restoration and maintenance of the iconic Combwich Buoy is down to him, as is the traditional red telephone box which houses one of the villages defibrillators. In addition to this he is also the enthusiastic parish Footpaths Liaison Officer, not only reporting problems, but dealing with them too. Bob also organises the distribution of the parish newsletter to 400 homes.

Bob is always ready to help and richly deserves this award.

He was nominated for this award by Lindsey Parsons on behalf of Otterhampton Parish cCouncil



Garden Club Show



More information about Garden Club at
www.cosgardenclub.com



Next Garden Club: Christmas Wreath Making
Wednesday 13th December

SCORCHEO !! *By Dick Best*

In the seventies "Scorcheo" used to be a funny TV weather forecast - but it ain't so funny now.

What we are seeing is the fulfilment of long-standing predictions that global warming would exist and lead to extreme weather events. Globally we frequently see meteorological records being broken - the hottest or the wettest or the longest - and the news that July 2023 was globally the hottest month ever recorded must be a sobering thought.

Locally, we have recently endured summer heat waves and drought and, in our bit of Steart, we have noticed some obvious, and hopefully short-lived, changes - fewer butterflies by day and fewer moths splattered on our windscreens at night, fewer bees visiting flowers, fewer birds singing in spring, fewer parents feeding young birds, no Blue Tits nesting in our boxes and no bats flying in the evenings.

Although these effects might be weather-related and temporary, they are ultimately associated with global warming, which is related to increasing levels of various gasses in the atmosphere released from the burning of fossil fuels - the "greenhouse effect". This is a process that will continue unless the levels of greenhouse gasses are controlled. At present the rise in average global temperature from pre-industrial revolution times is around 1.0°C, it is predicted that by 2040 the average rise in global temperature will reach 1.5°C and that is regarded by the UN's IPCC (Intergovernmental Panel on Climate Change) as a possible "tipping point for irreversible and dangerous impacts for humanity".

A rise of 1.0°C on an average global temperature may not sound to be significant but the evidence is already here - violent storms, droughts and floods, melting glaciers and polar ice, rising sea levels, crop failures.....

The only hope of preventing the worst effects of global warming is to hold steady the levels of greenhouse gasses in the atmosphere by reducing the burning of fossil fuels and at the same time increasing the use of renewable energy sources.

The Environment Agency predicts that, if global warming continues to rise, sea levels will rise by 1.0 metre (over three feet) by 2100, which means that within the next few decades Wall Common will flood regularly on high tides - and beyond that, who knows?

St Peter's Church Combwich

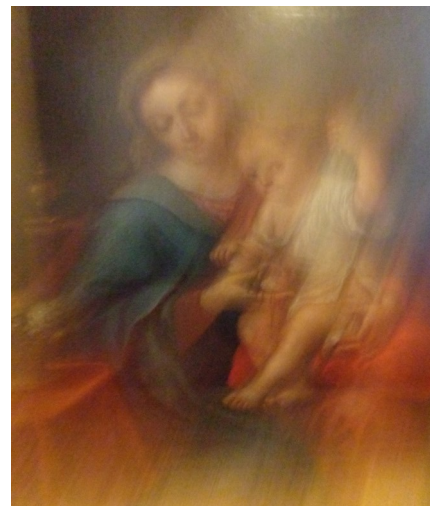
December 3rd Communion 11.15am
 December 3rd Christingle and Crib Service 4pm
 December 9th Praise and Worship Service 6pm
 December 14th Communion 11.15 am
 24th December Christmas Eve Service 9pm

**St Mary Magdalene Stockland
 Bristol**

Christmas Day Family Service 11am

Prayer Group
 Please come and join us
 every **THURSDAY**
 morning at **9.00am**
 to
 Pray
 At
**St Peter's Church
 Combwich**
 From Rev Jan Church
 Contact no: 07733433526

**Praise and
 Worship Service**
 St Peter's Church, Combwich
 On the
**Second Sunday of the
 Month**
@ 6.00pm
EVERYONE IS WELCOME
 Coffee and Cake after.



Hello from Harbour View Bar *by Bev Lang*

A very busy few months it has been. A massive thank you to all those people who supported the bar throughout the rugby. Very well attended and lots of shouting at the TV.



Harbour View Bar

I'd like to add a huge thank for all your donations for Dementia UK, we leave a small box on the bar and amazingly over the rugby World Cup I was able to send £80 to the charity. One of our lovely members also donated her sweepstake winnings too. Certificates are displayed proudly in the bar.

We opened the bar on most Saturdays to accommodate the screenings & wouldn't have been able to do that without the help of a couple of our members... you know who you are, most appreciated.

Our monthly quiz returns for our Christmas quiz on Saturday 16th Dec 8pm, sorry we couldn't fit one in November but other bookings for the hall/bar are going on. Harbour View Bar is now hosting the darts competitions and have our final one in the hall on Friday 1st Dec. Harbours Flights (our-dedicated home team) always there to help set up the boards & are playing well. The garden club continues to be supported well & Steve runs the bar for a couple of hours during their meeting.

We hope to have our AGM in January, as we are finalising accounts and other paperwork. We will advertise the date as soon as possible, please attend to see how we can move forward with this great facility we have.

We are looking for people to help with the treasury position, chairperson & secretary. We have had interest and the more people that are willing to give up some of their time the easier it will be.

The bar will be opening on Christmas Eve .. Sunday 24th Dec ... but not our normal Sunday hours.... We will be open 7-11pm and Christmas Day, time to be confirmed. The bar and lounge are available to hire for meetings and parties, please contact the village hall.

Thank you to Harbour View Bar committee and everyone who have helped us over the last few months. Continued support from our valued members is most appreciated.

Merry Christmas and see you all soon.

Harvest Supper in the Village Hall

Harvest Supper organised by St.Peter's was well attended.

The Reverend Alison organised a harvest supper based quiz.



What we've been up to!



In our September meeting our local artist Alison Jacobs gave us an insight into her life in art. Starting with her early art at Primary school and progressing through to her expressions of art today. Members thoroughly enjoyed her talk and seeing examples of her work; these included her portraits of cows and scenes of Steart Marshes and Watchet. One of our members visited Alison at her studio in Easy Quay, Watchet and was fascinated by her work. Who knew you could do art on an iPad! Thank you, Alison.

October saw us compete in our annual skittles evening, in Otterhampton village hall, with two teams playing 3 hands. It was a lovely friendly evening and a drink certainly helped! Obviously, we had a short meeting beforehand and a big thank you goes to Steve for opening the bar and to our sticker ups.



Combwich and District WI

theWI
INSPIRING WOMEN

Connie and Karis



Dates for your diary!

Thursday 16th November – Jane Sharpe 'All About Hedgehogs' – Competition – Handmade Christmas Decoration

Thursday 23rd November – Lunch Club at the Cottage Inn, Keenthorne

Thursday 21st December – Christmas Buffet/Quiz - Competition - best wrapped Secret Santa present

Thursday 18th January – start of new events programme, speaker to be confirmed

Thursday 25th January – Lunch Club at Blackmore Manor, Cannington

We welcome new members to join us at our meetings which are held on the third Thursday of each month in Otterhampton village hall at 7.00pm. Why not come along to one of our evenings, you will be warmly welcomed.

For more information contact Connie on 01278 653307



Christmas Market Saturday 9th December
10am - 12 noon

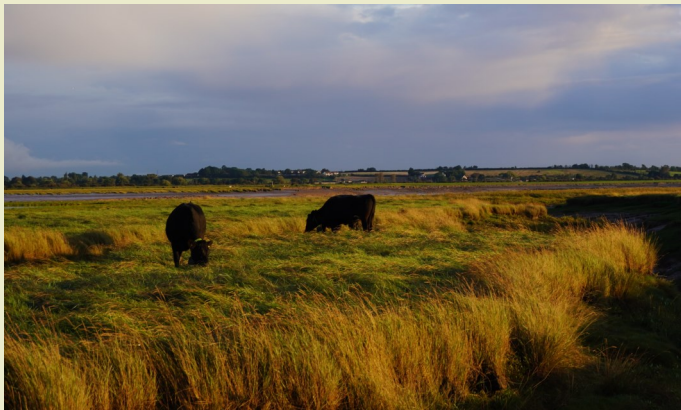
Salt Marsh Beef Grazing on Steart Point for the first time in 30 years

By Andy Darch

During the past summer we have been grazing 20 Angus beef cattle at Steart Point on land managed by the Wildfowl & Wetlands Trust (WWT).

When I say Steart Point - it is also known as 'Stert Point' or 'Fenning Island' the map says one thing, locals another, both unknown to anyone apart from a few really in the know - so I'll be describing it as 'Steart Point'.

The cattle help improve the quality of the habitat on the salt marsh. Low density grazing and light poaching helps to break up the dominating sea couch grass. Nibbling at the plants such as samphire and sea aster. Cattle have not been grazed at the point for almost 30 years as it was deemed too risky, and many cattle were lost to the sea. However, with the help of modern technology, our cattle will help to maintain and improve the condition of the wetland habitat.

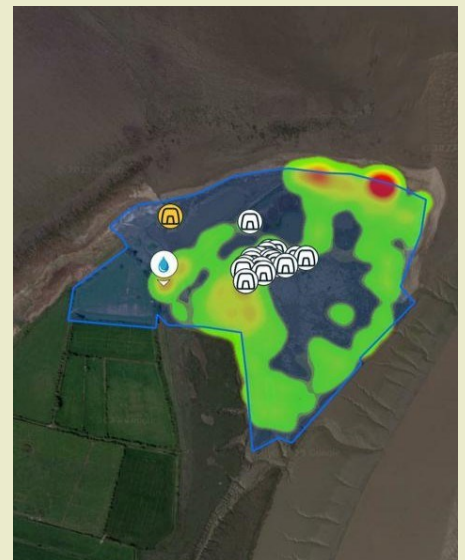


By returning the cattle to the marshland we hope that the selective grazing of the herbs and grasses will help with a few things. The sea couch will be knocked back long enough for other saltmarsh plants to grow. The increase in plant diversity and subsequent photosynthesis, helps to capture carbon in the ground adding to the amazing carbon sequestration marshlands already do.

This year the cattle have been allowed to graze throughout the area, including some areas of reedbeds. This may look brutal but it's introducing a variety of age structure much needed to some very rare saltmarsh specialist insects. We will be working with WWT to ensure there is rotational grazing of these areas to ensure recovery and no long-term damage to this important habitat.

All this hopefully encourages more bird-friendly plants that the birds can graze and nest in, making the habitat more desirable for them. Also, cow pats, although frustrating to stand in, are a super, great dollop of deliciousness for the right eyes. Food for birds, especially in winter when they are full of dung beetles, a great home for the dung beetles (when not being eaten by birds) and in summer they are great source of water for honeybees and other insects.

If you have been right out to Steart Point you may have seen the cattle. They are the ones that look like they are wearing cow bells. These are actually GPS trackers called 'no fence collars.' Worried that the landscape is quite treacherous with the mud flats, fast-moving tides and large scrapes sculpted by the sea that you could easily lose a Landrover in, we wanted to make sure the cattle would be safe.



The no fence collars enable us to set up an invisible boundary. The GPS in the collars connects and when the animal moves close to the boundary, a little tune plays to them as a warning that they are at the edge of their safe area. If they push too far then they receive a little electric shock. It's amazing how they have learnt what the tune means and now very rarely receive a shock.

We have had our fair share of frustrating moments though. Namely, break outs at 2am, lost collars and other livestock breaking in, which caused mass confusion. Every time things like this happen, we get notified through our app and that's when the phone will go mad letting us know there is an issue.

The cattle is not only just great for the insects, birds and the bees. Grass fed beef has extra nutritional benefits for us too over corn fed cattle. By grazing on the salt marsh the animals have been enjoying a completely natural diet meaning that the meat will generally be leaner and nutritionally dense. Grass fed meat is generally higher in Omega-3, rich in Vitamin A and E, and has lower amounts of saturated fats.

There are also added antioxidants, which the animals eat when eating the huge variety of grasses that are on the marshes.

All of this means that it costs us more and the process takes longer, but we think that it makes a real difference to the health of the cattle as they grow. They choose the different grasses and plants that they want to eat depending on their needs, ultimately adding to the taste.

As and when the cattle are ready there will be salt marsh meat boxes available to order, so please do let us know if you would like one.

£160 meat boxed consists of 10kgs of beef split as follow –

- 2 roasting joints
- 1 slow roasting joint
- 3 packs of 2 steaks
- 2 packs of diced beef
- 3 packs of mince

There may be some variation as the cattle do vary in size.

If you would like to go on the waiting list for a meat box or require more information, please email info@bluecarbonfarming.co.uk. Thank you, Matt, Andy and Sam - The Blue Carbon Farming Company.

Hinkley Community Days *by Andy Turnbull*



Some of the volunteers from Mitie and Magnox & painting of the village hall.

Andy Turnbull on behalf of Magnox and Mitie offered the village Garden Club some resources for a few days in August to help some of the villagers with their gardens. With help from Mike Narraway, Andy, and the team of volunteers from Hinkley A managed to do 5 gardens and also cleared the Church Garden. They also did some painting in the Village Hall and the Harbour View Club.

The team from Magnox and Mitie get one full day of paid time to support local groups. Andy and the team say it is a great privilege to be supporting the village as they have done for several years. They would like to thank Garden Club and the Village Hall for getting things organised.



New pond created

Weeds and overgrowth cleared



WWT Steart Marshes

working in partnership with



**Environment
Agency**



You might have noticed some extra muddy volunteers around the wetland walkway recently?

After contractors built the foundations, we are now busy constructing a cob roundhouse using traditional methods. A mix of clay, stone, and straw are combined through heavy mixing and treading. This is then laid onto the walls to be further stamped down and create the necessary strength. The finished building will provide a quiet, covered area for sitting and enjoying the views over the pond, for activities, and for group use.

If you'd like to get involved with the build... and mud (!), drop us an email to find out more.



We were delighted to welcome the 1st Combwich Brownies to site recently. They enjoyed some pond dipping to see what lives in our freshwater ditches, followed by



an exciting walk in the dark with volunteers Mandy and Lorna. Possibly the highlight of the event was the fresh milk they drank, kindly provided by the cows of Chalcott Farm.

See Alison Jacobs' stunning dragonfly mural on the hide window in the background!

-----Keep an eye out on Twitter, Facebook, and www.wwt.org.uk/steart for news and events

Reserve Office: 01278 651090 info.steart@wwt.org.uk

Site Manager: Alys Laver 07717 505966 alys.laver@wwt.org.uk

Engagement and Learning Manager: Nicole Turnbull 07717 342061 nicole.turnbull@wwt.org.uk

Welcome to The Anchor

Open Monday to Friday 4pm bar open
 Food Wednesday to Friday 6pm to 8.30
 Sat 12 to 11 bar open
 Sun 12 to 6pm bar open
 Saturday 12 to 2pm and 6pm to 8.30
 food
 Sun 12 to 2pm food



Hello everyone, Fae and I are working hard to bring you a new pub with events on every month. We are looking forward to hopefully meeting you all in the pub. We are always trying new things to try and see what you guys like, any suggestions on what you may like to see from us in the new year then please get in touch.

I am new to the village and really enjoying getting to know all the locals. I can't wait to get to know everyone even more.
 Jack

Kind regards The Anchor team.

Here is what we have on over the next couple months



December 2nd -Free pool comp
 December 16th - Vida Summer live band
 December 22nd - Grace's Quiz

December 31st - NYE Party
 January 6th - Bingo night
 January 13th - RJK live musician



Otter Wheels

Your volunteer car scheme is here for you.

Is lack of transport a problem? Want to visit a friend or family, or go to the dentist, doctor, hospital, then maybe we can help.

Ring Otter Wheels on 07925154216— to book a trip, but please give as much notice as you can before you need to travel. You will need to register (if you have not already

done so) on this number before you can book a trip

This not for profit car scheme has been running for several years with well over 1,200 trips completed. If you haven't tried us give us a go. Door to door service with friendly experienced drivers, all DBS checked and happy to help. Typical return journey prices are: -

	With bus pass	Without bus pass
Cannington Health Centre	£1.75	£3.50
Bridgwater Bus Station	£4.00	£8.00
Musgrove Hospital Taunton	£9.75	£19.50

Please note, when you renew your bus pass you must let us have your new number.

Feedback

Email, comment, feedback, and suggestions to the editor please.

Stories, articles reports, events and other items for publication in the next edition of Otter Tales need to be received by Thursday 11th January 2023.

Email The Editor:
otter.tales@aol.com

Birthday Bells

If you would like to have 'Happy Birthday' played on the church bells

Email bell.ringers@aol.com

Otter Tales:

Editor: Barry Leathwood. Assisted by Steven Parker.
 Distribution: Bob Birkenhead email:
Birkenhead.bob@gmail.com

Articles for publication: email otter.tales@aol.com
 Published with the generous support of the Parish Council
 Every effort is made to ensure the accuracy of information published in Otter Tales, the views expressed are those of individuals or organisations.

Articles for the next issue by **Thursday 11th January**

Mobile Library: Dates and Times.

Thursday 14th December, 25th January, 22nd February
 Combwich Harbour TA5 2QU 10.15 – 10.50
 Combwich Shop TA5 2QW 10.55 – 11.20
 Stockland Bristol Club TA5 2PY 11.30– 11.55

Defibrillators can save your life.

There are two defibrillators in Combwich. One is in the telephone box, the other at the Anchor/Ship Lane wall.

Stearth has one defibrillator. It is on the wall of the old chapel (signposted).

Dial 999 to call for an ambulance then follow the simple instructions. **NO TRAINING NEEDED**



To keep up to date with all that is happening in the parish check the various village noticeboards, log onto www.combwich.org or visit the "All Things Combwich" Facebook page. For information about the village hall go to

www.otterhamptonvillagehall.co.uk

For local history visit **Combwich, Stearth and Otterhampton Memories Facebook Group**

To be notified of events and local information by email contact: barry.leathwood@btinternet.com.

Your favourite Jam, Marmalade and chutney and also plants are still available.

Proceeds from the market will be donated to charity.

Ring Liz on 01278 652687



Village Shop Open - Shop local - Use it or lose it

Opening hours

Monday to Friday 9.00am to 1.00pm and 2.00pm till 6.00pm

Saturday 9.00am till 1.00pm

